

UPDATE: WHEN TO REFER FOR SPINAL SURGERY

Dr Rodney Allan

Neurosurgeon and Endovascular Neurosurgeon

CERVICAL

🚩 Red flags for referral

- Arm symptoms
 - Weakness especially progressive
 - Intractable pain
 - Those who have failed conservative therapy
 - Physio
 - Medications
 - Injections

➕ Operative options



Cervical disc arthroplasty



Minimally invasive foraminotomy and discectomy

THORACIC

- Conservative therapy almost always

🚩 Red flags for referral

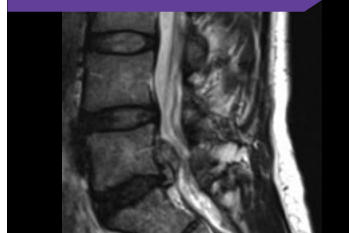
Symptoms such as weight loss, nocturnal pain, and/or leg weakness should prompt a scan and possible referral.

LUMBAR

🚩 Red flags for referral

- Leg symptoms:
 - Leg pain or weakness (especially progressive or severe)
- Neurogenic claudication
- Failed conservative therapy

➕ Operative options



Laminectomy



Minimally invasive discectomy

BACK PAIN

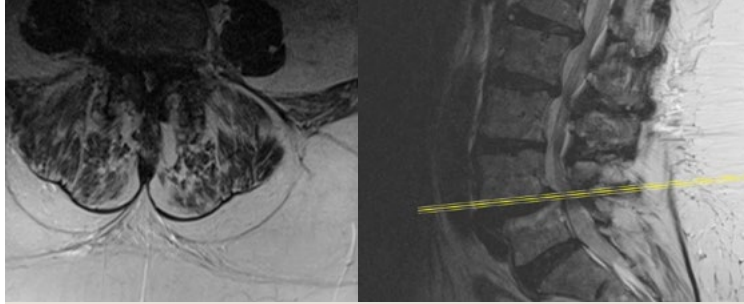
Surgery ONLY indicated if conservative therapy fails

- Physiotherapy
- Exercise
- Weight loss

Red flags for referral

- Nocturnal pain
- Progressive deficits
- Bladder or bowel disturbance

Indications for surgery



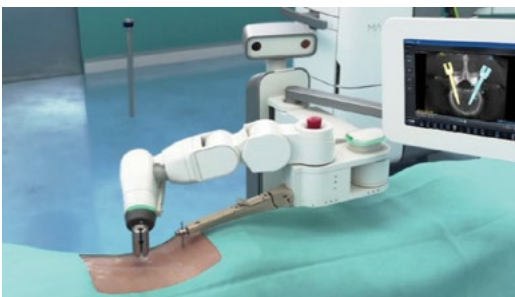
- Spondylolisthesis (slippage of a vertebra on another with pain)
- Degenerative disc disease with pain referred to that location

Operative options



Minimally invasive fusion

WHAT'S NEXT?



Robotic spine surgery

- Allows for even more precise placement of instruments and decompression under imaging
- Smaller cuts and earlier discharge
- Available August 2019

DR RODNEY ALLAN

BSc(MED) MB BS (HONS), FRACS

NEUROSURGEON · ENDOVASCULAR NEUROSURGEON

Telephone 1300 255 261
Website www.neurosurgeon.com.au
Postal address Missenden Road LPO,
PO Box M93, Camperdown NSW 2050

To refer a patient, please send the referral and scan report to either:

- Fax 02 9383 1450, or
- Email surgery@neurosurgeon.com.au